

Server Manager - Remote Desktop Services - Overview

### GET STARTED WITH REMOTE DESKTOP SERVICES

## 1 Set up a Remote Desktop Services deployment

**QUICK START** Virtual machine-based desktop deployment Session-based desktop deployment

#### Add RD Gateway Servers

Select a server

This wizard allows you to add RD Gateway servers to your deployment. Select the servers on which to install the RD Gateway role service.

Server Pool		
Name	IP Address	Operat
Server01.LABRDS.LCCAL	10.173.138.215	

1 Computer(s) found

#### Selected

Computer

0 Computer(s) selected

The credentials of the LABRDS\Administrator account will be used to add the servers.

< Previous Next > Add Cancel

# Win10 RST installing

The screenshot shows a web browser window displaying the Microsoft website page for "RSAT for Windows 10". The page title is "RSAT for Windows 10". Below the title, there is an important notice: "IMPORTANT: Starting with Windows 10 October 2018 Update, RSAT is included as a set of 'Features on Demand' in Windows 10 itself. See 'Install Instructions' below for details, and 'Additional Information' for recommendations and troubleshooting. RSAT lets IT admins manage Windows Server roles and features from a Windows 10 PC." A "Downloads" notification bubble is visible in the top right corner, showing a file named "WindowsTH-KB2693643-x64.msu".

The main content area is titled "Important! Selecting a language to that language." and contains sections for "Install instructions" and "To install specific RSAT tools on Windows 10 October 2018 Update or later". A dialog box titled "The updates are being installed" is overlaid on the page, showing the installation status of "Installing Update for Windows (KB2693643) (Update 1 of 0...)" with a progress bar and a "Cancel" button.

The screenshot shows a Windows 10 desktop with a blue background. The "System Properties" dialog box is open, displaying the "Computer Name" tab. The dialog box shows the following information:

- Computer Name: [Empty]
- Hardware: [Empty]
- System Protection: [Empty]
- Remote: [Empty]

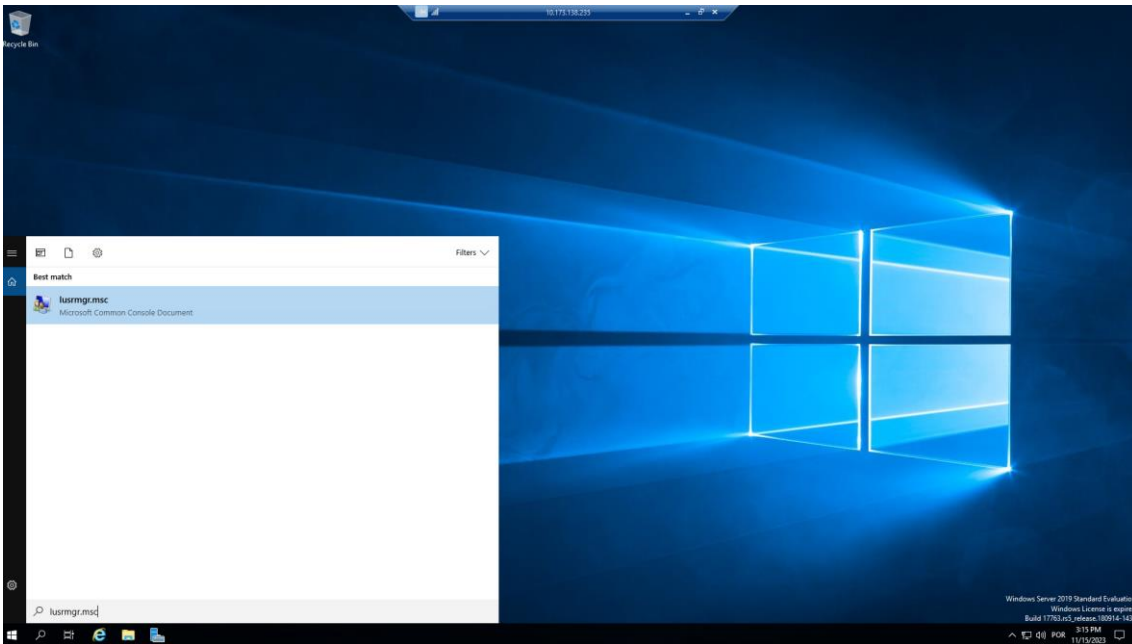
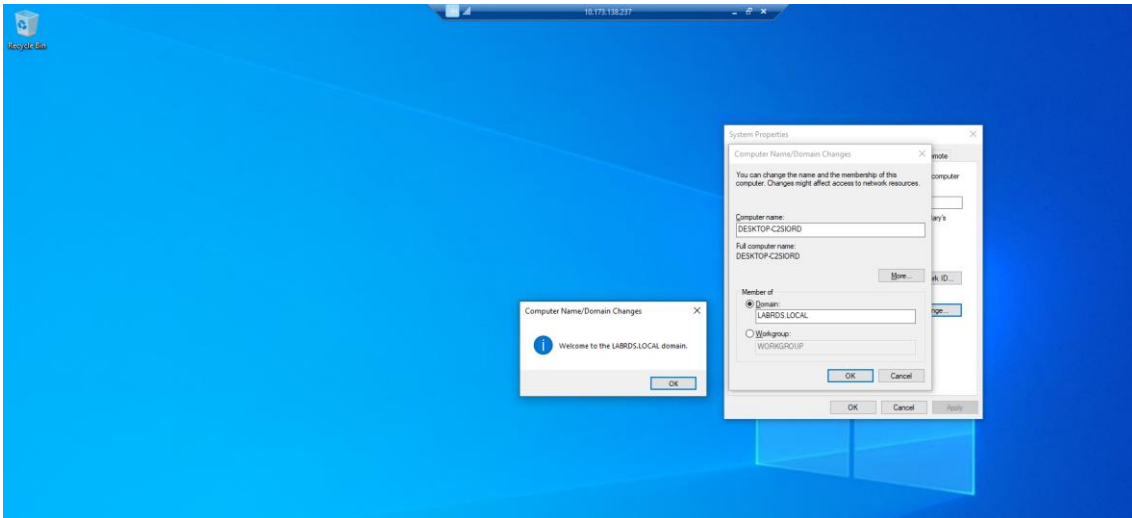
Windows uses the following information to identify your computer on the network:

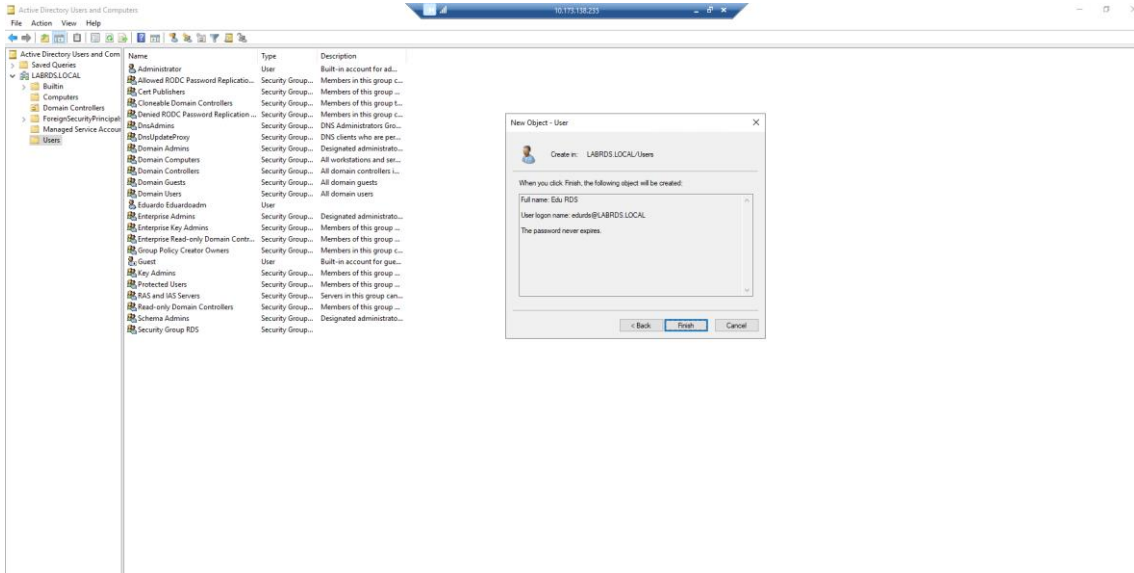
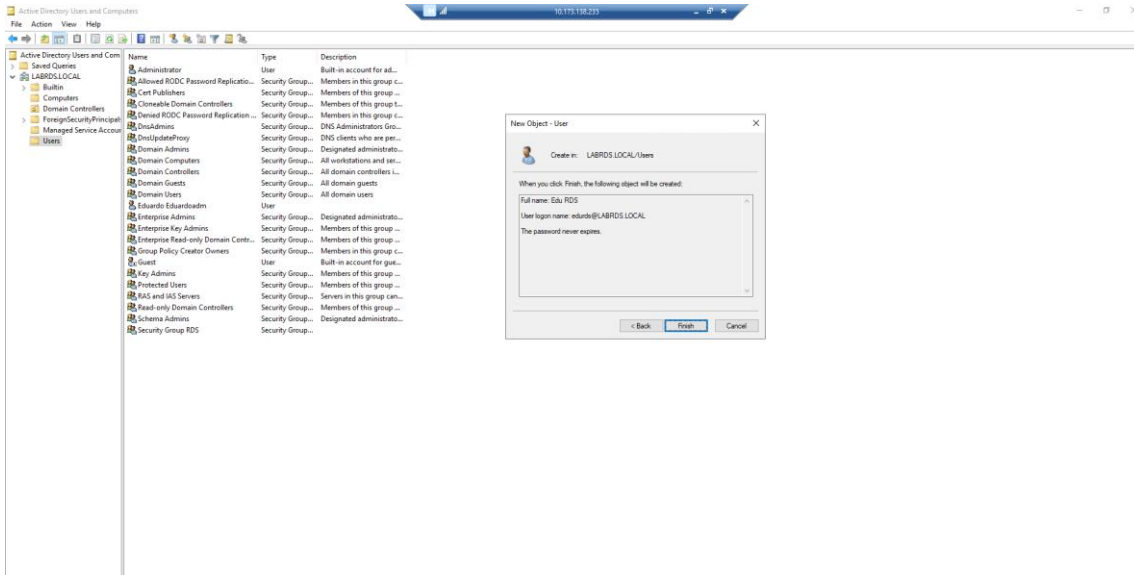
- Computer description: [Empty]
- Full computer name: DESKTOP-C2SORD
- Workgroup: WORKGROUP

To use a standard to join a domain or workgroup, click Network ID. [Network ID...]

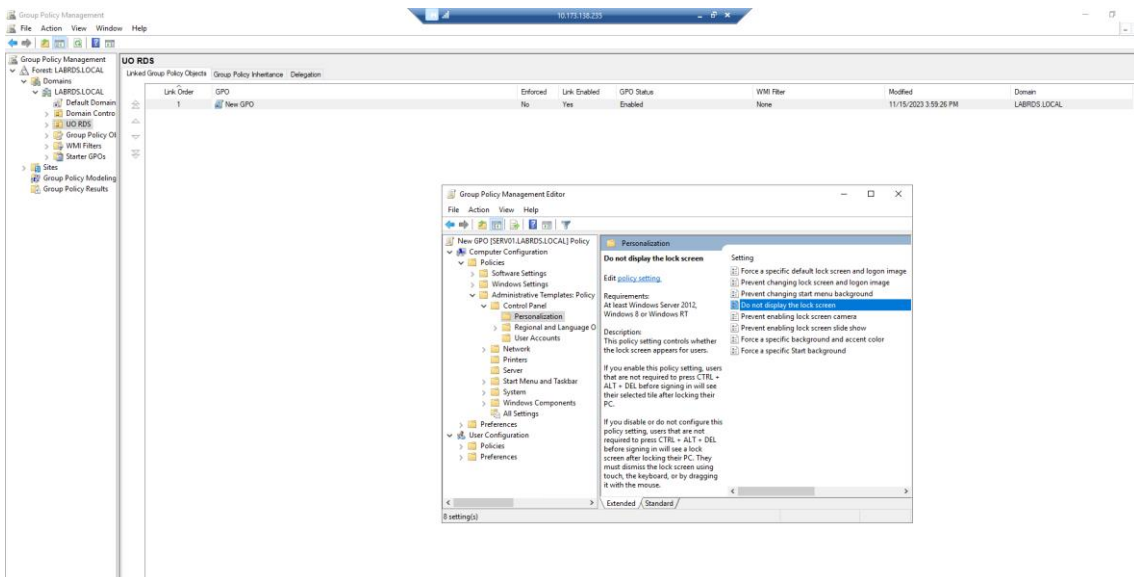
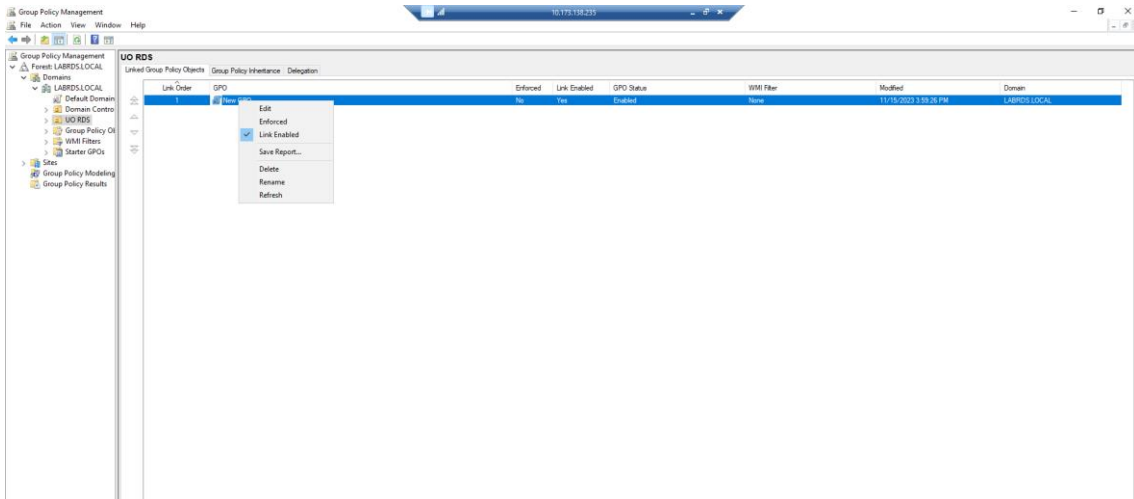
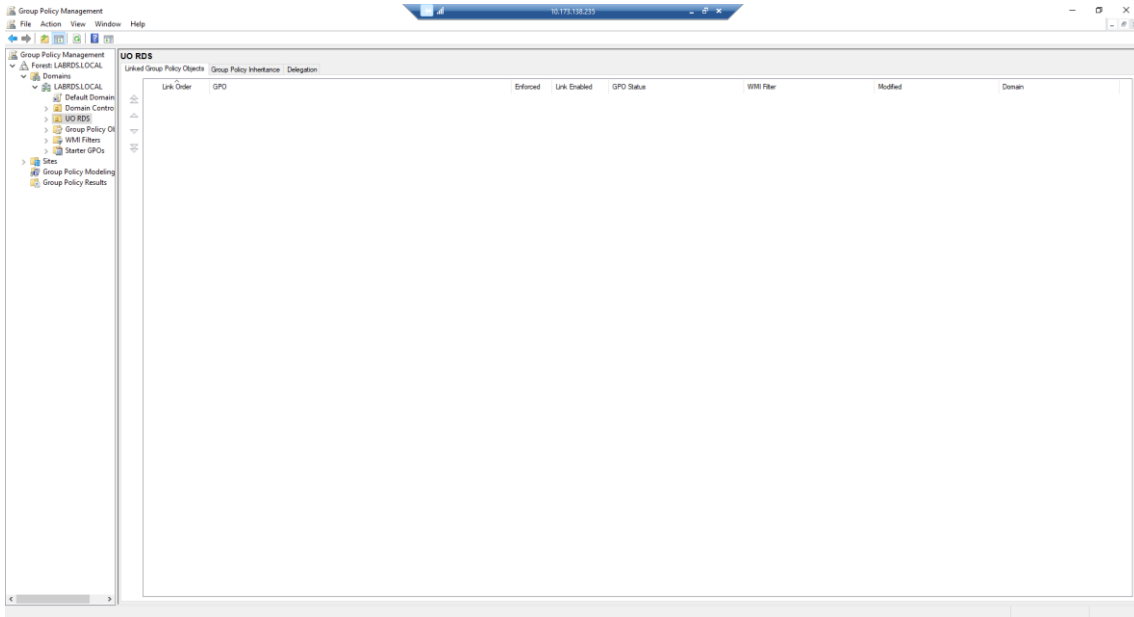
To rename this computer or change its domain or workgroup, click Change. [Change...]

Buttons: OK, Cancel, Apply









Group Policy Management

File Action View Window Help

10.172.138.233

Group Policy Management

Forest: LABRDS.LOCAL

- LABRDS.LOCAL
  - Default Domain
  - Domain Control
  - UD RDS
  - Group Policy Objects
  - WMI Filters
  - Starter GPOs
- Sites
- Group Policy Modeling
- Group Policy Results

UD RDS

Linked Group Policy Objects

Link Order	GPO	Enforced	Link Enabled	GPO Status	WMI Filter	Modified	Domain
1	New GPO	No	Yes	Enabled	None	11/15/2023 3:59:26 PM	LABRDS.LOCAL

Do not display the lock screen

Do not display the lock screen

Previous Setting Next Setting

Not Configured  
 Enabled  
 Disabled

Comment:

Supported on: At least Windows Server 2012, Windows 8 or Windows RT

Options:

Help:

This policy setting controls whether the lock screen appears for users.

If you enable this policy setting, users that are not required to press CTRL + ALT + DEL before signing in will see their selected tile after locking their PC.

If you disable or do not configure this policy setting, users that are not required to press CTRL + ALT + DEL before signing in will see a lock screen after locking their PC. They must dismiss the lock screen using touch, the keyboard, or by dragging it with the mouse.

OK Cancel Apply

Personalization

Do not display the lock screen

Setting

- Force a specific default lock screen and logon image
- Prevent changing lock screen and logon image
- Prevent changing start menu background
- Do not display the lock screen
- Prevent enabling lock screen camera
- Prevent enabling lock screen side show
- Force a specific background and accent color
- Force a specific Start background

Requirements:

- At least Windows Server 2012, Windows 8 or Windows RT

Description:

This policy setting controls whether the lock screen appears for users.

If you enable this policy setting, users that are not required to press CTRL + ALT + DEL before signing in will see their selected tile after locking their PC.

If you disable or do not configure this policy setting, users that are not required to press CTRL + ALT + DEL before signing in will see a lock screen after locking their PC. They must dismiss the lock screen using touch, the keyboard, or by dragging it with the mouse.

Extended Standard

Group Policy Management

File Action View Window Help

10.172.138.233

Group Policy Management

Forest: LABRDS.LOCAL

- LABRDS.LOCAL
  - Default Domain
  - Domain Control
  - UD RDS
  - New GPO
  - Group Policy Objects
  - WMI Filters
  - Starter GPOs
- Sites
- Group Policy Modeling
- Group Policy Results

New GPO

Score Details Settings Delegation

Links

Display links in this location: LABRDS.LOCAL

The following sites, domains, and OUs are linked to this GPO:

Location	Enforced	Link Enabled	Path
UD RDS	No	Yes	LABRDS.LOCAL/UD RDS

Security Filtering

The settings in this GPO can only apply to the following groups, users, and computers:

Name

- Authenticated Users
- Administrators (LABRDS.LOCAL)
- Administrators (LABRDS.LOCAL)

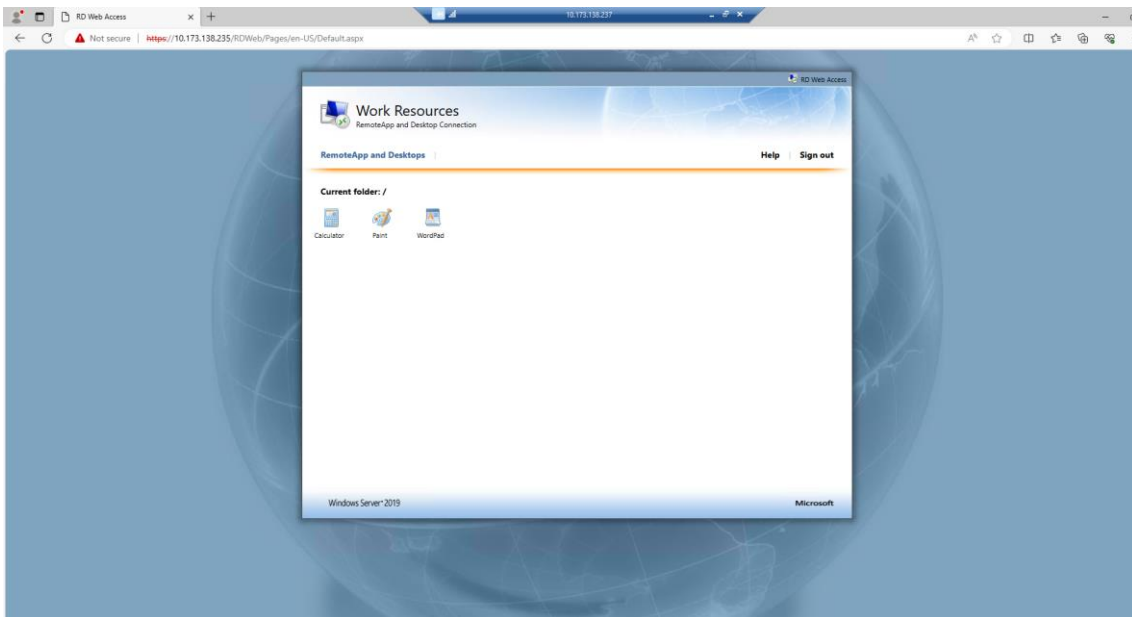
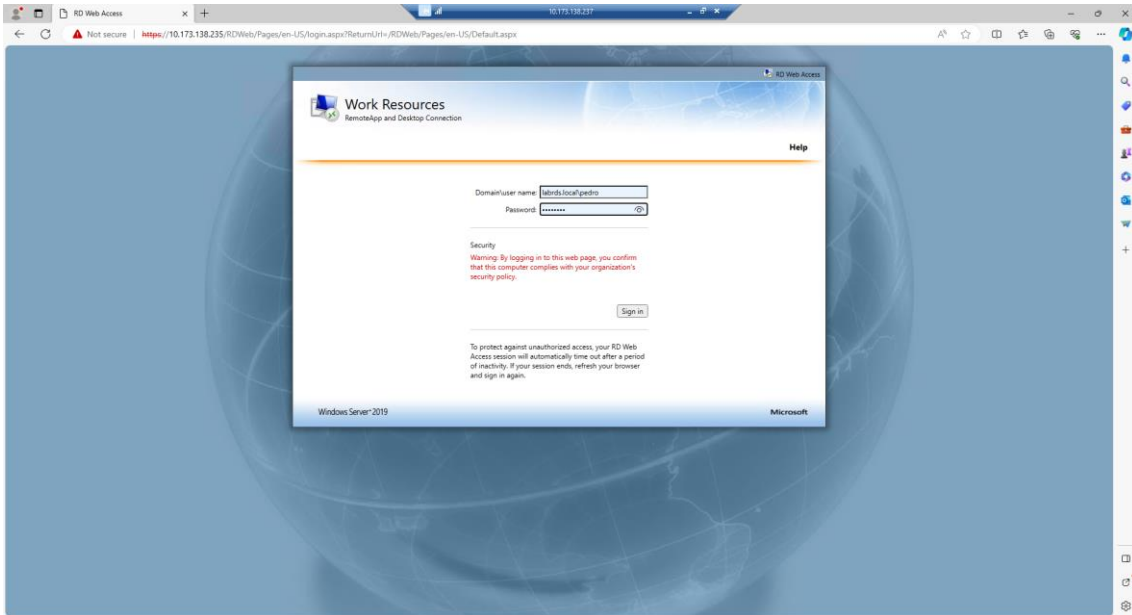
Add Remove Properties

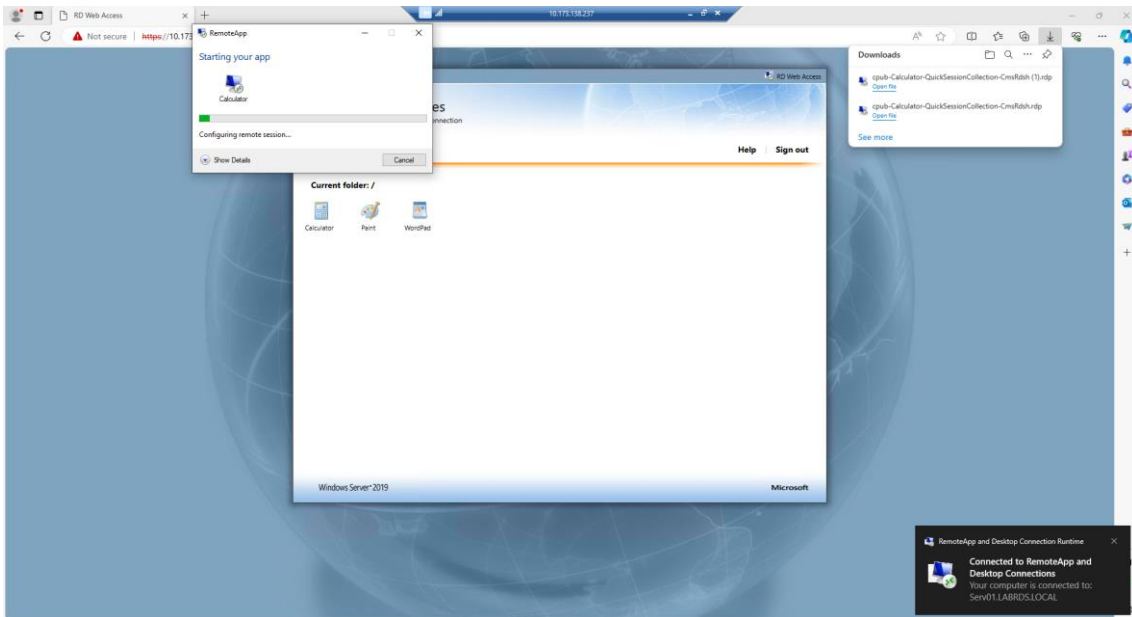
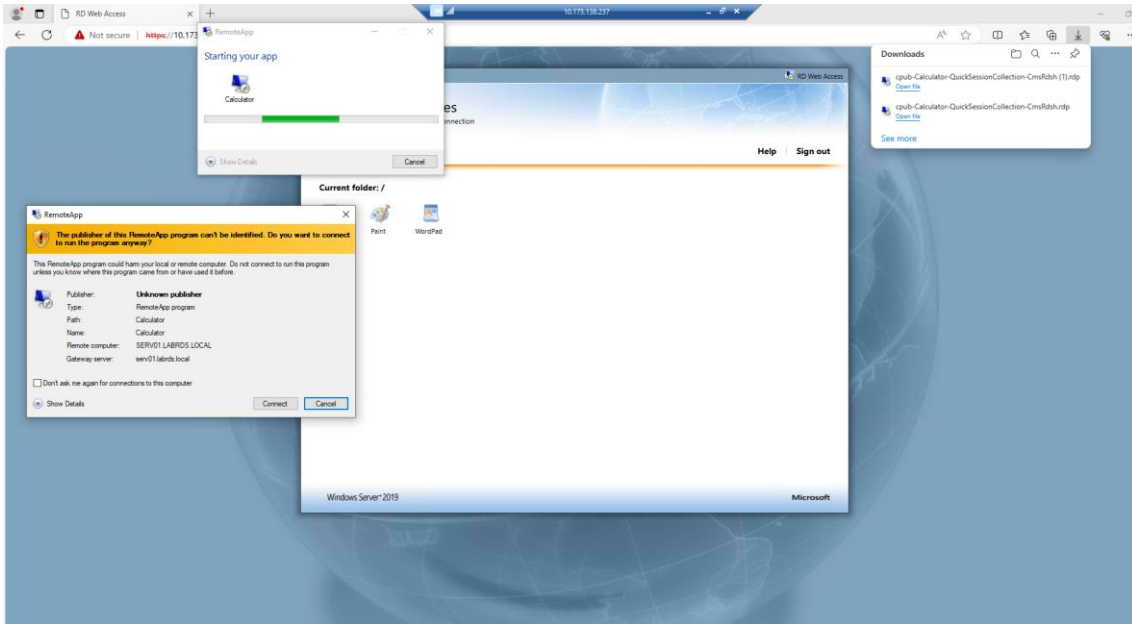
WMI Filtering

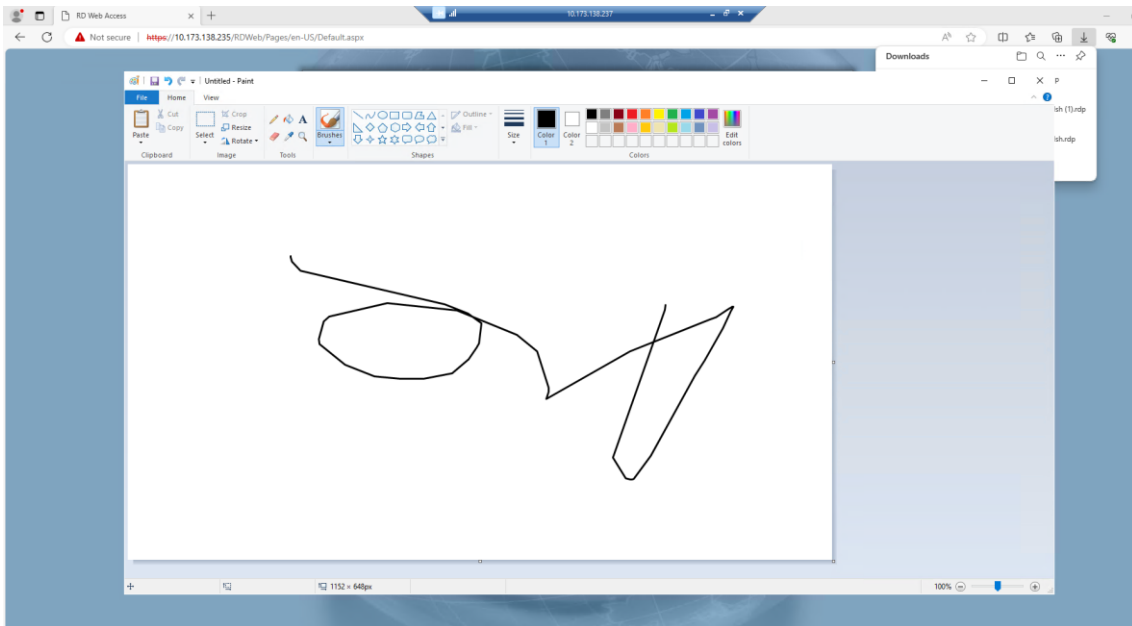
This GPO is linked to the following WMI filter:

(none)

Open







Settings

Home

Find a setting

Update & Security

- Windows Update
- Delivery Optimization
- Windows Security
- Backup
- Troubleshoot
- Recovery
- Activation
- Find my device
- For developers
- Windows Insider Program

## Windows Update

**Restart required**  
Your device will restart outside of active hours.

Your device is missing important security and quality fixes.

2023-11 Cumulative Update for Windows 10 Version 22H2 for x64-based Systems (KB5032169)  
Status: Pending restart

[Restart now](#) [Schedule the restart](#)

**View optional updates**

- Pause updates for 7 days**  
Get latest updates to pause again
- Install updates as soon as possible**  
We'll notify you before the restart, and you can postpone if needed
- Change active hours**  
Currently 8:00 AM to 5:00 PM
- View update history**  
See updates installed on your device
- Advanced options**  
Additional update controls and settings

Looking for info on the latest updates  
[Learn more](#)

**Related links**

- [Check Storage](#)
- [OS build info](#)

**Help from the web**

- [Installing Windows 11 on eligible devices](#)
- [Troubleshooting Windows Update problems](#)
- [More about Windows 11](#)

[Get help](#)  
[Give feedback](#)