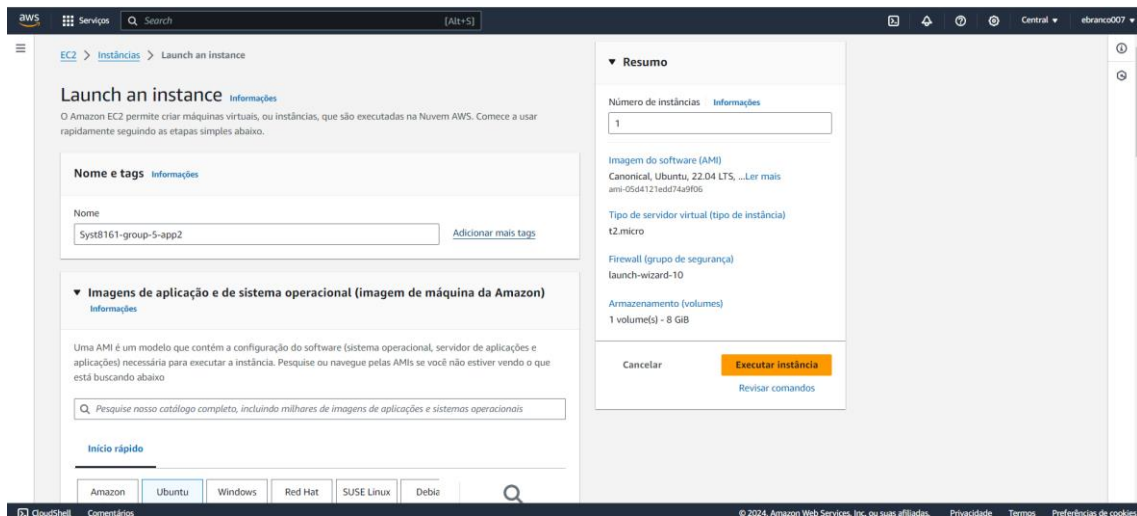
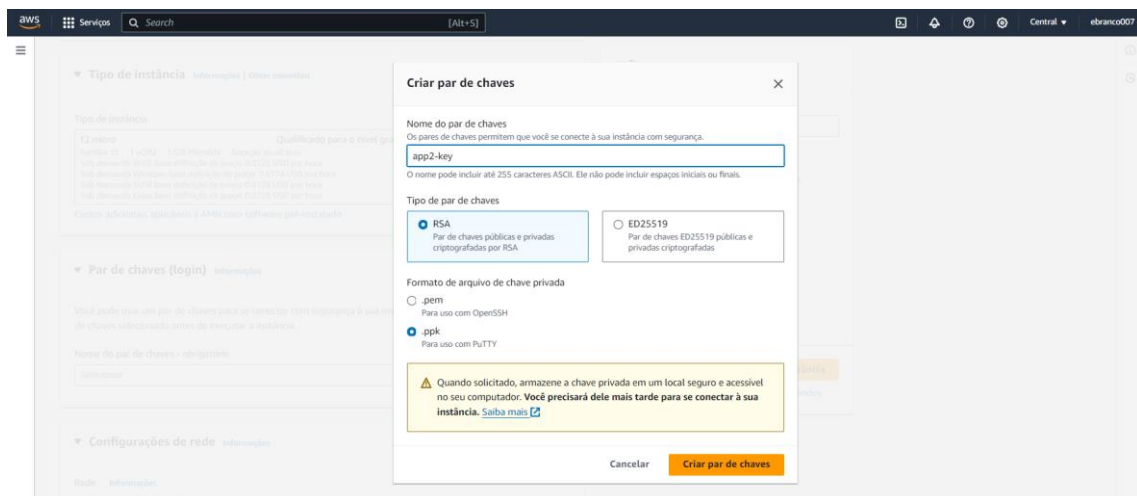


App2

Create instance



Create keypair



Instances (1/1) Information

Find Instance by attribute or tag (case-sensitive) All states

Name	Instance ID	Instance state	Instance type	Status Check	Alarm status	Availability Zone
Syst8161-group-5-app2	i-0009b91abae2a3108	Running	t2.micro	-	-	ca-central-1b

Instância: i-0009b91abae2a3108 (Syst8161-group-5-app2)

Hostname type Nome do IP: ip-172-31-13-115.ca-central-1.compute.internal	Private IP DNS name (IPv4 only) ip-172-31-13-115.ca-central-1.compute.internal	Elastic IP addresses -
Reply private resource DNS name IPv4 (A) Automatically assigned IP address 35.183.133.196 [Public IP]	Instance type t2.micro	AWS Compute Optimizer Discovery Opt-in to AWS Compute Optimizer for recommendations. know more
Role of IAM -	ID da VPC vpc-0fa1b41e0035bbf14	Auto Scaling Group Name -
IMDSv2 Required	ID yes sub-rede subnet-0b7259a4dd5b02a28	Monitoring
Platform	ID da AMI	

Editar regras de entrada

As regras de entrada controlam o tráfego de entrada que tem permissão para acessar a instância.

Regras de entrada

ID da regra do grupo de segurança	Tipo	Protocolo	Intervalo de portas	Origem	Descrição - opcional	
sg-083d98924aa9b5280	HTTPS	TCP	443	Personalizado 0.0.0.0		Excluir
sg-09e04436ee1879dd	HTTP	TCP	80	Personalizado 0.0.0.0		Excluir
sg-046e05115a0e42414	SSH	TCP	22	Personalizado 0.0.0.0		Excluir
-	ICMP personalizado - IPv4	Tudo	Tudo	Qualquer loc... 0.0.0.0		Excluir
-	TCP personalizado	TCP	3306	Qualquer loc... 0.0.0.0		Excluir

Adicionar regra

As regras com a origem 0.0.0.0 ou ::0 permitem que todos os endereços IP acessem a instância. Recomendamos configurar as regras de grupo de segurança para permitir o acesso apenas de endereços IP conhecidos.

Cancelar Visualizar alterações Salvar regras

RDS

Amazon RDS

Resources To update

You are using the following Amazon RDS resources in the Canada (Central) region (used/quota)

Database Instances (0/40)	Parameter groups (1)
Allocated Storage (0TB/100TB)	Pattern (1)
Increase the DB instance limit	Custom (0/100)
Database Clusters (0/40)	Option groups (1)
Reserved Instances (0/40)	Pattern (1)
Snapshots (8)	Custom (0/20)
Manual	Subnet groups (1/50)
Database Cluster (0/100)	Supported platforms: CPU
Database Instance (2/100)	Default network sgs: 0fa1b41e00356bf14
Automated	
Database Cluster (6)	
Database Instance (6)	
Recent events (0)	
Event subscriptions (0/20)	

Create database

Amazon Relational Database Service (RDS) makes it easy to set up, operate, and scale a relational database in the cloud.

[Restore from S3](#) [Create database](#)

Note: Your DB instances will run in the Canada (Central) region

Service integrity View the service status dashboard

Current status	Details
✓ Amazon Relational Database Service (Central)	The service is working normally

Recommended services

Other services that might fit your workflow, based on AWS customers with similar usage patterns.

No recommendations yet

Recommended services will be displayed based on your AWS console usage.

Additional Information

- [RDS Basics](#)
- [Overview and Features](#)
- [Documentation](#)
- [Articles and tutorials](#)
- [Data Import Guide for MySQL](#)
- [Data Import Guide for Oracle](#)
- [Data Import Guide for SQL Server](#)
- [New RDS Feature Announcement](#)
- [Pricing](#)
- [Forums](#)

Database preview environment

Get early access to new database engine versions. The Amazon RDS Database Preview Environment allows you to work with upcoming beta versions, release candidates, early production versions of PostgreSQL, and breakthrough versions of MySQL. Because the preview environment instances are fully functional, you can easily test new attributes and functionalities with your applications.

[RDS Preview for MySQL and PostgreSQL in US East \(Ohio\)](#)

settings

Database Instance Identifier Information

Enter a name for the DB instance. The name must be unique across all DB instances owned by your AWS account in the current AWS Region.

The DB instance identifier is case-insensitive, but it is stored in all lowercase letters (as in "mydbinstance"). Restrictions: 1 to 63 alphanumeric characters or hyphens. The first character must be a letter. It cannot contain two consecutive hyphens. It cannot end with a hyphen.

Credential Settings

Main User Name Information

Enter a login ID for the primary user of your DB instance.

From one to 16 alphanumeric characters. The first character must be a letter.

Credentials management

You can use AWS Secrets Manager or manage your master user credentials.

Managed in AWS Secrets Manager - most secure
RDS generates a password for you and manages it throughout its lifecycle using AWS Secrets Manager.

Self managed
Create your own password or have RDS create a password that you manage.

Auto generate password
Amazon RDS can generate a password for you, or you can specify your own password.

Master password Information

Minimum constraints: At least 8 printable ASCII characters. Can't contain any of the following symbols: / " @

Confirm master password Information

Instance configuration

The DB instance configuration options below are limited to those supported by the engine selected above.

DB Instance Class Information

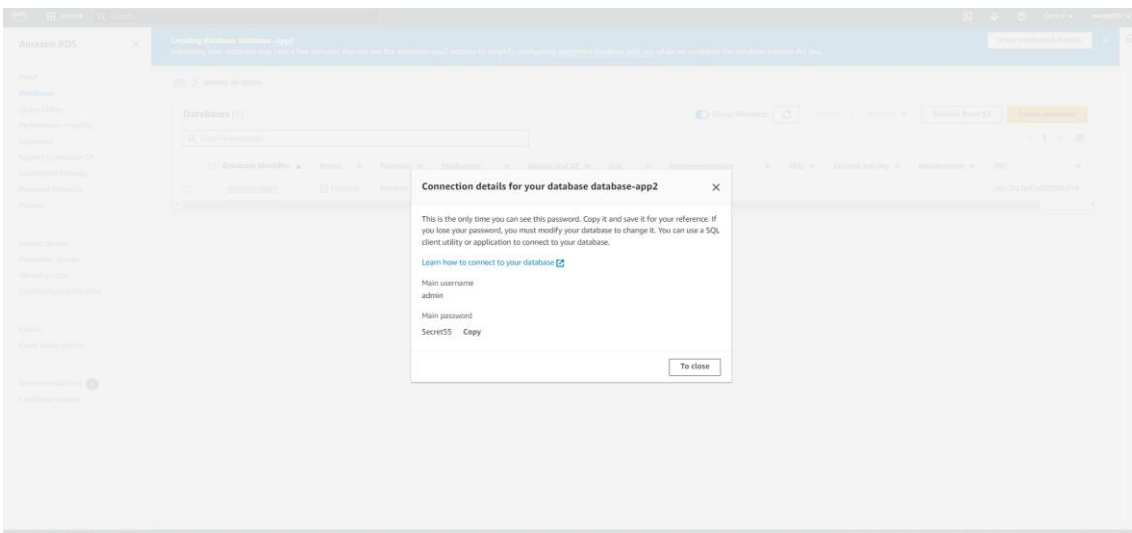
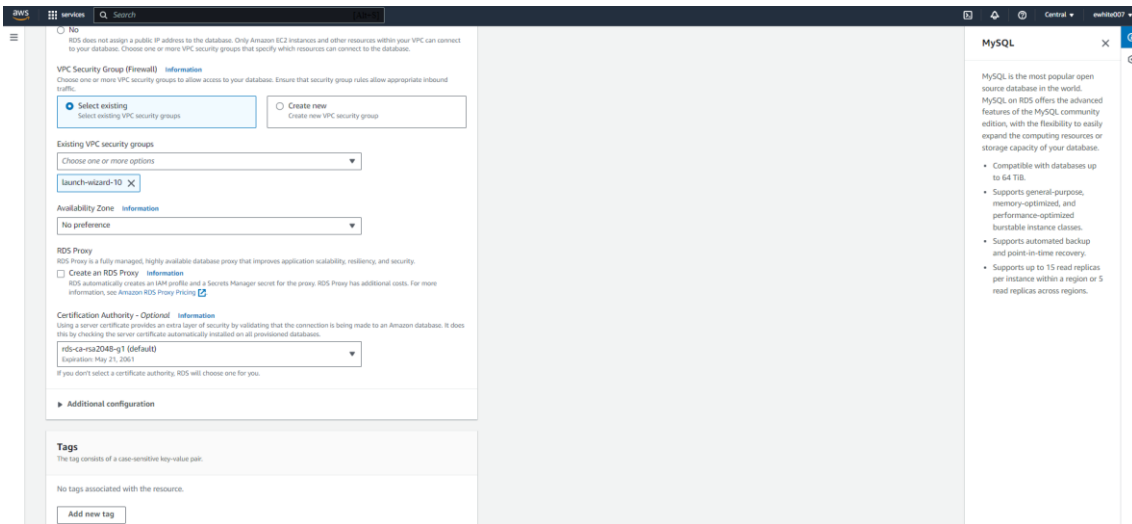
Hide filters

Show instance classes supported by Amazon RDS Optimized Writes [Details](#)

MySQL

MySQL is the most popular open source database in the world. MySQL on RDS offers the advanced features of the MySQL community edition, with the flexibility to easily expand the computing resources or storage capacity of your database.

- Compatible with databases up to 64 TiB.
- Supports general-purpose, memory-optimized, and performance-optimized burstable instance classes.
- Supports automated backup and point-in-time recovery.
- Supports up to 15 read replicas per instance within a region or 5 read replicas across regions.



Endpoint

db-app2.ck8aq9ippyec.ca-central-1.rds.amazonaws.com
3306 - admin / Secret55

Amazon RDS > Databases > db-app2

db-app2

Summary

Database identifier db-app2	Status Backlog up	Function Instance	Mechanism MySQL Community	Recommendations
CPU 20.99%	Class db.t3.micro	Current activity 0 Connections	Region and AZ ca-central-1a	

Security and connection | Monitoring | Logs and events | Settings | Maintenance and backups | Tags | Recommendations

Security and connection

Endpoint and port Endpoint: db-app2-ck8aq9ipyyec-ca-central-1-rds.amazonaws.com Door: 3306	Networks Availability Zone: ca-central-1a VPC: vpc-0fa1b41e0035bbf14 Subnet group: default-vpc-0fa1b41e0035bbf14 Subnets: subnet-0b72594dd5b02a28, subnet-0c30c8b2c01df2229, subnet-0935a0d6e6e53004b Network type: IPv4	Security VPC security groups: launch-wizard-10 (sg-0ae7e7fbfe587287a) - Active Publicly accessible: Yes Certification Authority: rds-ca-rsa2048-g1 Certification authority date: May 21, 2021, 19:02 (UTC-04:00) DB instance certificate expiration date: March 29, 2025, 14:55 (UTC-04:00)
--	---	--

Identity and Access Management (IAM) > Functions > RDS-ec2-app2

RDS-ec2-app2

Summary

Creation date March 30, 2024, 11:41 (UTC-04:00)	Role arn:aws:iam::881241281835:role/RDS-ec2-app2	Instance profile ARN arn:aws:iam::881241281835:instance-profile/RDS-ec2-app2
Last activity 59 minutes ago	Maximum session duration 1 hour	

Permissions | Trusts | Hang tags | Access Consultant | Revoke sessions

Permissions policies (1)

Policy name	Type	Associate entities
AmazonRDSFullAccess	Managed by AWS	1

Permissions limit (not defined)

Generate policy based on CloudTrail events

Amazon RDS > Databases > db-app2

db-app2

Summary

Database identifier db-app2	Status Available	Function Instance	Mechanism MySQL Community	Recommendations 2 Information
CPU -	Class db.t3.micro	Current activity	Region and AZ ca-central-1a	

Security and connection | Monitoring | Logs and events | Settings | Maintenance and backups | Tags | Recommendations

Security and connection

Endpoint and port Endpoint: db-app2-ck8aq9ipyyec-ca-central-1-rds.amazonaws.com Door: 3306	Networks Availability Zone: ca-central-1a VPC: vpc-0fa1b41e0035bbf14 Subnet group: default-vpc-0fa1b41e0035bbf14 Subnets: subnet-0b72594dd5b02a28, subnet-0c30c8b2c01df2229	Security VPC security groups: launch-wizard-10 (sg-0ae7e7fbfe587287a) - Active, rds-ec2-2 (sg-0a3d1c19fa222b7fc) - Active Publicly accessible: Yes Certification Authority: rds-ca-rsa2048-g1
--	---	--

```
ubuntu@ip-172-31-13-115: ~  
  
Expanded Security Maintenance for Applications is not enabled.  
  
0 updates can be applied immediately.  
  
Enable ESM Apps to receive additional future security updates.  
See https://ubuntu.com/esm or run: sudo pro status  
  
The list of available updates is more than a week old.  
To check for new updates run: sudo apt update  
  
The programs included with the Ubuntu system are free software;  
the exact distribution terms for each program are described in the  
individual files in /usr/share/doc/*/copyright.  
  
Ubuntu comes with ABSOLUTELY NO WARRANTY, to the extent permitted by  
applicable law.  
  
To run a command as administrator (user "root"), use "sudo <command>".  
See "man sudo_root" for details.  
ubuntu@ip-172-31-13-115:~$ sudo apt update
```

```
ubuntu@ip-172-31-13-115:~$ sudo apt update  
update-ccache-service is a disabled or a static unit not running, not starting it.  
Setting up linux-modules-6.5.0-1016-aws (6.5.0-1016.16-22.04.1) ...  
Setting up linux-image-6.5.0-1016-aws (6.5.0-1016.16-22.04.1) ...  
I: /boot/vmlinuz is now a symlink to vmlinuz-6.5.0-1016-aws  
I: /boot/initrd.img is now a symlink to initrd.img-6.5.0-1016-aws  
Setting up linux-aws (6.5.0-1016.16-22.04.1) ...  
Setting up linux-base (6.5.0-1016.16-22.04.1) ...  
Processing triggers for man-db (2.10.2-1) ...  
Processing triggers for dbus (1.12.20-2ubuntu4.1) ...  
Processing triggers for install-info (6.8-9build1) ...  
Processing triggers for libc-bin (2.35-0ubuntu3.6) ...  
Processing triggers for linux-image-6.5.0-1016-aws (6.5.0-1016.16-22.04.1) ...  
/etc/kernel/postinst.d/initramfs-tools:  
update-initramfs: Generating /boot/initrd.img-6.5.0-1016-aws  
/etc/kernel/postinst.d/zz-update-grub:  
Sourcing file /etc/default/grub  
Sourcing file /etc/default/grub.d/40-force-partuuid.cfg  
Sourcing file /etc/default/grub.d/50-cloudimg-settings.cfg  
Sourcing file /etc/default/grub.d/90-force-select.cfg  
Generating grub configuration file ...  
GRUB_FORCE_PARTUUID is set, will attempt initrdless boot  
Found linux image: /boot/vmlinuz-6.5.0-1016-aws  
Found initrd image: /boot/microcode.cpio /boot/initrd.img-6.5.0-1016-aws  
Found linux image: /boot/vmlinuz-6.5.0-1014-aws  
Found initrd image: /boot/microcode.cpio /boot/initrd.img-6.5.0-1014-aws  
Warning: os-prober will not be executed to detect other bootable partitions.  
Systems on them will not be added to the GRUB boot configuration.  
Check GRUB_DISABLE_OS_PROBER documentation entry.  
done  
Scanning processes...  
Scanning candidates...  
Scanning linux images...  
  
Restarting services...  
/etc/needrestart/needrestart.d/system-manager  
systemctl restart packagekit.service polkit.service rsyslog.service serial-getty@tty0.service systemd-journald.service systemd-networkd.service systemd-resolved.service systemd-udev.service  
Service restarts being deferred:  
/etc/needrestart/needrestart.d/dmcc.service  
systemctl restart getty@tty1.service  
systemctl restart networkd-dispatcher.service  
systemctl restart systemd-logind.service  
systemctl restart unattended-upgrades.service  
systemctl restart user@1000.service  
  
No containers need to be restarted.  
  
No user sessions are running outdated binaries.  
  
No VM guests are running outdated hypervisor (qemu) binaries on this host.  
ubuntu@ip-172-31-13-115:~$ sudo apt install apache2  
Reading package lists... Done  
Building dependency tree... Done  
Reading state information... Done  
The following additional packages will be installed:  
  apache2-bin apache2-data apache2-utils bsip2 libapr1 libaprutil1 libaprutil1-dbd-sqlite3 libaprutil1-ldap liblua5.3-0 mailcap mime-support ssl-cert  
Suggested packages:  
  apache2-doc apache2-suexec-pristine | apache2-suexec-custom www-browser bsip2-doc  
The following NEW packages will be installed:  
  apache2 apache2-bin apache2-data apache2-utils bsip2 libapr1 libaprutil1 libaprutil1-dbd-sqlite3 libaprutil1-ldap liblua5.3-0 mailcap mime-support ssl-cert  
0 upgraded, 13 newly installed, 0 to remove and 3 not upgraded.  
Need to get 2138 kB of archives.  
After this operation, 1021 kB of additional disk space will be used.  
Do you want to continue? [Y/n]
```

```
ubuntu@ip-172-31-13-115:~$ sudo systemctl restart apache2.service
apache2.service is a disabled or a static unit not running, not starting it.
Setting up linux-modules-6.5.0-1016-aws (6.5.0-1016.16-22.04.1) ...
Setting up linux-image-6.5.0-1016-aws (6.5.0-1016.16-22.04.1) ...
I: /boot/vmlinuz is now a symlink to vmlinuz-6.5.0-1016-aws
I: /boot/initrd.img is now a symlink to initrd.img-6.5.0-1016-aws
Setting up linux-image-aws (6.5.0.1016.16-22.04.1) ...
Setting up linux-aws (6.5.0.1016.16-22.04.1) ...
Processing triggers for man-db (2.10.2-1) ...
Processing triggers for dbus (1.12.20-2ubuntu4.1) ...
Processing triggers for install-info (6.8-8build1) ...
Processing triggers for libc-bin (2.35-0ubuntu3.6) ...
Processing triggers for linux-image-6.5.0-1016-aws (6.5.0-1016.16-22.04.1) ...
/etc/kernel/postinst.d/initramfs-tools:
update-initramfs: Generating /boot/initrd.img-6.5.0-1016-aws
/etc/kernel/postinst.d/rz-update-grub:
Sourcing file '/etc/default/grub'
Sourcing file '/etc/default/grub.d/40-force-partuuid.cfg'
Sourcing file '/etc/default/grub.d/50-cloudimg-settings.cfg'
Sourcing file '/etc/default/grub.d/init-select.cfg'
Generating grub configuration file ...
GRUB_FORCE_PARTUUID is set, will attempt initrdless boot
Found linux image: /boot/vmlinuz-6.5.0-1016-aws
Found initrd image: /boot/microcode.cpio /boot/initrd.img-6.5.0-1016-aws
Found linux image: /boot/vmlinuz-6.5.0-1016-aws
Found initrd image: /boot/microcode.cpio /boot/initrd.img-6.5.0-1016-aws
Warning: os-prober will not be executed to detect other bootable partitions.
Systems on them will not be added to the GRUB boot configuration.
Check GRUB_DISABLE_OS_PROBER documentation entry.
done
Scanning processes...
Scanning candidates...
Scanning linux images...

Restarting services...
systemctl restart packagekit.service polkit.service rsyslog.service serial-getty@ttyS0.service systemd-journald.service systemd-networkd.service systemd-resolved.service systemd-udev.service
Service restarts being deferred:
/etc/needrestart/restart.d/dbus.service
systemctl restart getty@tty1.service
systemctl restart networkd-dispatcher.service
systemctl restart system-logind.service
systemctl restart unattended-upgrades.service
systemctl restart user@1000.service

No containers need to be restarted.

No user sessions are running outdated binaries.

No VM guests are running outdated hypervisor (qemu) binaries on this host.
ubuntu@ip-172-31-13-115:~$ sudo apt install apache2
Reading package lists... Done
Building dependency tree... Done
Reading state information... Done
The following additional packages will be installed:
  apache2-bin apache2-data apache2-utils bzrlib libapr1 libaprutil1 libaprutil1-dbd-sqlite3 libaprutil1-ldap liblua5.3-0 mailcap mime-support ssl-cert
Suggested packages:
  apache2-doc apache2-suexec-pristine | apache2-suexec-custom www-browser bzrlib-doc
The following NEW packages will be installed:
  apache2 apache2-bin apache2-data apache2-utils bzrlib libapr1 libaprutil1 libaprutil1-dbd-sqlite3 libaprutil1-ldap liblua5.3-0 mailcap mime-support ssl-cert
0 upgraded, 13 newly installed, 0 to remove and 3 not upgraded.
Need to get 2138 kB of archives.
After this operation, 4521 kB of additional disk space will be used.
Do you want to continue? [Y/n] [!]
```

```
ubuntu@ip-172-31-13-115:~$ sudo systemctl restart apache2.service
Enabling conf other-vhosts-access-log.
Enabling conf security.
Enabling conf serve-cgi-bin.
Enabling site 000-default.
Created symlink /etc/systemd/system/multi-user.target.wants/apache2.service → /lib/systemd/system/apache2.service.
Created symlink /etc/systemd/system/multi-user.target.wants/apache-htcacheclean.service → /lib/systemd/system/apache-htcacheclean.service.
Processing triggers for ufw (0.36.1-4ubuntu0.1) ...
Processing triggers for man-db (2.10.2-1) ...
Processing triggers for libc-bin (2.35-0ubuntu3.6) ...
Scanning processes...
Scanning candidates...
Scanning linux images...

Restarting services...
Service restarts being deferred:
/etc/needrestart/restart.d/dbus.service
systemctl restart getty@tty1.service
systemctl restart networkd-dispatcher.service
systemctl restart system-logind.service
systemctl restart unattended-upgrades.service
systemctl restart user@1000.service

No containers need to be restarted.


No user sessions are running outdated binaries.

No VM guests are running outdated hypervisor (qemu) binaries on this host.
ubuntu@ip-172-31-13-115:~$ sudo ufw app list
Available applications:
  Apache
  Apache Full
  Apache Secure
  OpenSSH
ubuntu@ip-172-31-13-115:~$ sudo ufw allow 'Apache'
Rules updated
Rules updated (v6)
ubuntu@ip-172-31-13-115:~$ sudo ufw status
Status: inactive
ubuntu@ip-172-31-13-115:~$ sudo ufw status
Status: inactive
ubuntu@ip-172-31-13-115:~$ sudo ufw status
Status: inactive
ubuntu@ip-172-31-13-115:~$ sudo systemctl status apache2
● apache2.service - The Apache HTTP Server
   Loaded: loaded (/lib/systemd/system/apache2.service; enabled; vendor preset: enabled)
   Active: active (running) since Sat 2024-03-30 13:36:24 UTC; 4min 40s ago
     Docs: https://httpd.apache.org/docs/2.4/
   Main PID: 9341 (apache2)
     Tasks: 55 (limit: 1121)
    Memory: 4.9M
         CPU: 48ms
   CGroup: /system.slice/apache2.service
           └─9341 /usr/sbin/apache2 -k start
             └─9343 /usr/sbin/apache2 -k start
               └─9344 /usr/sbin/apache2 -k start

Mar 30 13:36:24 ip-172-31-13-115 systemd[1]: Starting The Apache HTTP Server...
Mar 30 13:36:24 ip-172-31-13-115 systemd[1]: Started The Apache HTTP Server.
ubuntu@ip-172-31-13-115:~$ hostname -I
172.31.13.115
ubuntu@ip-172-31-13-115:~$ curl -4 icanhazip.com
35.183.133.196
ubuntu@ip-172-31-13-115:~$
```

← → ↻ Inseguro ec2-35-183-133-196.ca-central-1.compute.amazonaws.com ☆

Barra de favoritos (6) TUDO O QUE V... conestoga College Superbid Brasil - Lei... Leilão Oficial Online... LOTOMANIA 60 NU... Freitas Leilões Onlin... Consulta Processual...



Apache2 Default Page

It works!

This is the default welcome page used to test the correct operation of the Apache2 server after installation on Ubuntu systems. It is based on the equivalent page on Debian, from which the Ubuntu Apache packaging is derived. If you can read this page, it means that the Apache HTTP server installed at this site is working properly. You should **replace this file** (located at `/var/www/html/index.html`) before continuing to operate your HTTP server.

If you are a normal user of this web site and don't know what this page is about, this probably means that the site is currently unavailable due to maintenance. If the problem persists, please contact the site's administrator.

Configuration Overview

Ubuntu's Apache2 default configuration is different from the upstream default configuration, and split into several files optimized for interaction with Ubuntu tools. The configuration system is **fully documented in `/usr/share/doc/apache2/README.Debian.gz`**. Refer to this for the full documentation. Documentation for the web server itself can be found by accessing the **manual** if the `apache2-doc` package was installed on this server.

The configuration layout for an Apache2 web server installation on Ubuntu systems is as follows:

```

/etc/apache2/
|-- apache2.conf
|   |-- ports.conf
|-- mods-enabled
|   |-- *.load
|   |-- *.conf
|-- conf-enabled
|   |-- *.conf
|-- sites-enabled

```

```

ubuntu@ip-172-31-13-115:/etc/apache2/mods-enabled$ ll
total 8
drwxr-xr-x 2 root root 4096 Mar 30 13:36 ./
drwxr-xr-x 8 root root 4096 Mar 30 13:36 ../
lrwxrwxrwx 1 root root   36 Mar 30 13:36 access_compat.load -> ../mods-available/access_compat.load
lrwxrwxrwx 1 root root   28 Mar 30 13:36 alias.conf -> ../mods-available/alias.conf
lrwxrwxrwx 1 root root   28 Mar 30 13:36 alias.load -> ../mods-available/alias.load
lrwxrwxrwx 1 root root   33 Mar 30 13:36 auth_basic.load -> ../mods-available/auth_basic.load
lrwxrwxrwx 1 root root   33 Mar 30 13:36 authn_core.load -> ../mods-available/authn_core.load
lrwxrwxrwx 1 root root   33 Mar 30 13:36 authn_file.load -> ../mods-available/authn_file.load
lrwxrwxrwx 1 root root   33 Mar 30 13:36 authz_core.load -> ../mods-available/authz_core.load
lrwxrwxrwx 1 root root   33 Mar 30 13:36 authz_host.load -> ../mods-available/authz_host.load
lrwxrwxrwx 1 root root   33 Mar 30 13:36 authz_user.load -> ../mods-available/authz_user.load
lrwxrwxrwx 1 root root   32 Mar 30 13:36 autoindex.conf -> ../mods-available/autoindex.conf
lrwxrwxrwx 1 root root   32 Mar 30 13:36 autoindex.load -> ../mods-available/autoindex.load
lrwxrwxrwx 1 root root   30 Mar 30 13:36 deflate.conf -> ../mods-available/deflate.conf
lrwxrwxrwx 1 root root   30 Mar 30 13:36 deflate.load -> ../mods-available/deflate.load
lrwxrwxrwx 1 root root   26 Mar 30 13:36 dir.conf -> ../mods-available/dir.conf
lrwxrwxrwx 1 root root   26 Mar 30 13:36 dir.load -> ../mods-available/dir.load
lrwxrwxrwx 1 root root   26 Mar 30 13:36 env.load -> ../mods-available/env.load
lrwxrwxrwx 1 root root   29 Mar 30 13:36 filter.load -> ../mods-available/filter.load
lrwxrwxrwx 1 root root   27 Mar 30 13:36 mime.conf -> ../mods-available/mime.conf
lrwxrwxrwx 1 root root   27 Mar 30 13:36 mime.load -> ../mods-available/mime.load
lrwxrwxrwx 1 root root   32 Mar 30 13:36 mpm_event.conf -> ../mods-available/mpm_event.conf
lrwxrwxrwx 1 root root   32 Mar 30 13:36 mpm_event.load -> ../mods-available/mpm_event.load
lrwxrwxrwx 1 root root   34 Mar 30 13:36 negotiation.conf -> ../mods-available/negotiation.conf
lrwxrwxrwx 1 root root   34 Mar 30 13:36 negotiation.load -> ../mods-available/negotiation.load
lrwxrwxrwx 1 root root   33 Mar 30 13:36 reqtimeout.conf -> ../mods-available/reqtimeout.conf
lrwxrwxrwx 1 root root   33 Mar 30 13:36 reqtimeout.load -> ../mods-available/reqtimeout.load
lrwxrwxrwx 1 root root   31 Mar 30 13:36 setenvif.conf -> ../mods-available/setenvif.conf
lrwxrwxrwx 1 root root   31 Mar 30 13:36 setenvif.load -> ../mods-available/setenvif.load
lrwxrwxrwx 1 root root   29 Mar 30 13:36 status.conf -> ../mods-available/status.conf
lrwxrwxrwx 1 root root   29 Mar 30 13:36 status.load -> ../mods-available/status.load
ubuntu@ip-172-31-13-115:/etc/apache2/mods-enabled$

```

```

ubuntu@ip-172-31-13-115:/etc/apache2/mods-enabled
GNU nano 6.2 dir.conf
#IfModule mod_dir.c>
    DirectoryIndex index.php index.cgi index.pl index.html index.xhtml index.htm
</IfModule>
# vim: syntax=apache ts=4 sw=4 sts=4 sr noet

```


ubuntu@ip-172-31-13-115: /etc/apache2/mods-enabled

```
GNU nano 6.2 /etc
<VirtualHost *:80>
    # The ServerName directive sets the request scheme, hostname and port
    # the server uses to identify itself. This is used when creating
    # redirection URLs. In the context of virtual hosts, the ServerName
    # specifies what hostname must appear in the request's Host: header to
    # match this virtual host. For the default virtual host (this file) the
    # value is not decisive as it is used as a last resort host regardless.
    # However, you must set it for any further virtual host explicitly.
    #ServerName www.example.com

    ServerAdmin webmaster@localhost
    DocumentRoot /var/www/html

<Directory /var/www/html>
    Options Indexes FollowSymLinks MultiViews
    AllowOverride All
    Require all granted
</Directory>

    # Available loglevels: trace8, ..., tracel, debug, info, notice, warn,
    # error, crit, alert, emerg.
    # It is also possible to configure the loglevel for particular
    # modules, e.g.
    #LogLevel info ssl:warn

    ErrorLog ${APACHE_LOG_DIR}/error.log
    CustomLog ${APACHE_LOG_DIR}/access.log combined

    # For most configuration files from conf-available/, which are
    # enabled or disabled at a global level, it is possible to
    # include a line for only one particular virtual host. For example the
    # following line enables the CGI configuration for this host only
    # after it has been globally disabled with "a2disconf".
    #Include conf-available/serve-cgi-bin.conf
</VirtualHost>

# vim: syntax=apache ts=4 sw=4 sts=4 sr noet
```

```
ubuntu@ip-172-31-13-115: /etc/apache2/mods-enabled
```

```
No containers need to be restarted.
```

```
No user sessions are running outdated binaries.
```

```
No VM guests are running outdated hypervisor (qemu) binaries on this host.
```

```
ubuntu@ip-172-31-13-115:/etc/apache2/mods-enabled$ php -i | grep -i mysql
```

```
ubuntu@ip-172-31-13-115:/etc/apache2/mods-enabled$ php -v
```

```
PHP 8.1.2-1ubuntu2.14 (cli) (built: Aug 18 2023 11:41:11) (NTS)
```

```
Copyright (c) The PHP Group
```

```
Zend Engine v4.1.2, Copyright (c) Zend Technologies
```

```
with Zend OPcache v8.1.2-1ubuntu2.14, Copyright (c), by Zend Technologies
```

```
ubuntu@ip-172-31-13-115:/etc/apache2/mods-enabled$ sudo apt-get install php-mysql
```

```
Reading package lists... Done
```

```
Building dependency tree... Done
```

```
Reading state information... Done
```

```
The following additional packages will be installed:
```

```
php8.1-mysql
```

```
The following NEW packages will be installed:
```

```
php-mysql php8.1-mysql
```

```
0 upgraded, 2 newly installed, 0 to remove and 3 not upgraded.
```

```
Need to get 132 kB of archives.
```

```
After this operation, 476 kB of additional disk space will be used.
```

```
Do you want to continue? [Y/n] y
```

```
Get:1 http://ca-central-1.ec2.archive.ubuntu.com/ubuntu jammy-updates/main amd64 php8.1-mysql amd64 8.1.2-
```

```
Get:2 http://ca-central-1.ec2.archive.ubuntu.com/ubuntu jammy/main amd64 php-mysql all 2:8.1+92ubuntu1 [18
```

```
Fetch:132 kB in 0s (1752 kB/s)
```

```
Selecting previously unselected package php8.1-mysql.
```

```
(Reading database ... 96392 files and directories currently installed.)
```

```
Preparing to unpack .../php8.1-mysql_8.1.2-1ubuntu2.14_amd64.deb ...
```

```
Unpacking php8.1-mysql (8.1.2-1ubuntu2.14) ...
```

```
Selecting previously unselected package php-mysql.
```

```
Preparing to unpack .../php-mysql_2:8.1+92ubuntu1_all.deb ...
```

```
Unpacking php-mysql (2:8.1+92ubuntu1) ...
```

```
Setting up php8.1-mysql (8.1.2-1ubuntu2.14) ...
```

```
Creating config file /etc/php/8.1/mods-available/mysqlnd.ini with new version
```

```
Creating config file /etc/php/8.1/mods-available/mysqli.ini with new version
```

```
Creating config file /etc/php/8.1/mods-available/pdo_mysql.ini with new version
```

```
Setting up php-mysql (2:8.1+92ubuntu1) ...
```

```
Processing triggers for php8.1-cli (8.1.2-1ubuntu2.14) ...
```

```
Scanning processes...
```

```
Scanning candidates...
```

```
Scanning linux images...
```

```
Restarting services...
```

```
Service restarts being deferred:
```

```
/etc/needrestart/restart.d/dbus.service
```

```
systemctl restart getty@tty1.service
```

```
systemctl restart networkd-dispatcher.service
```

```
systemctl restart systemd-logind.service
```

```
systemctl restart unattended-upgrades.service
```

```
systemctl restart user@1000.service
```

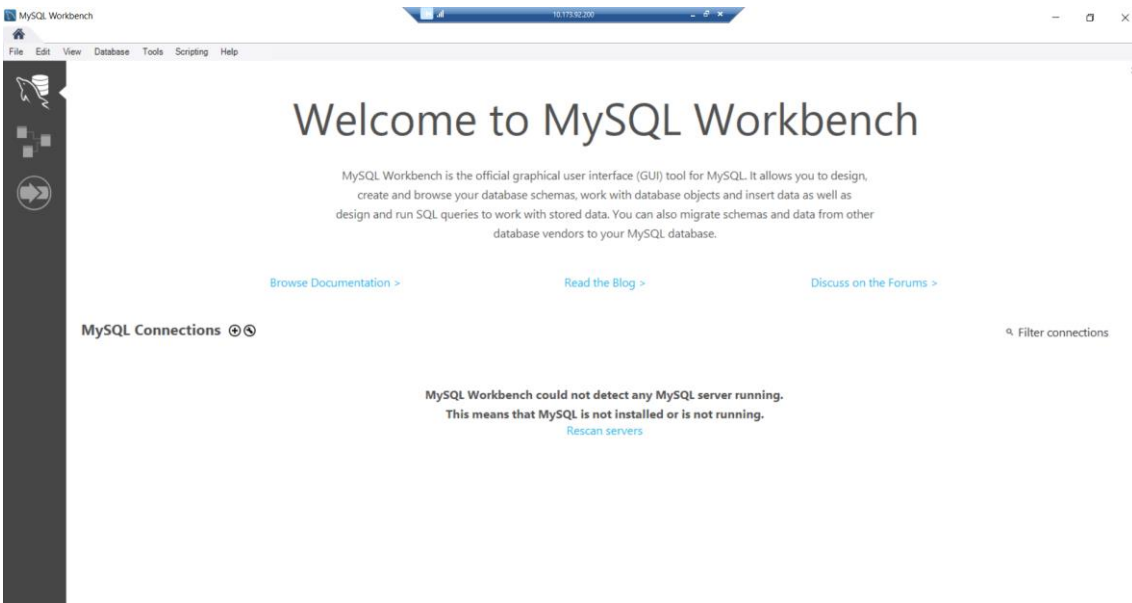
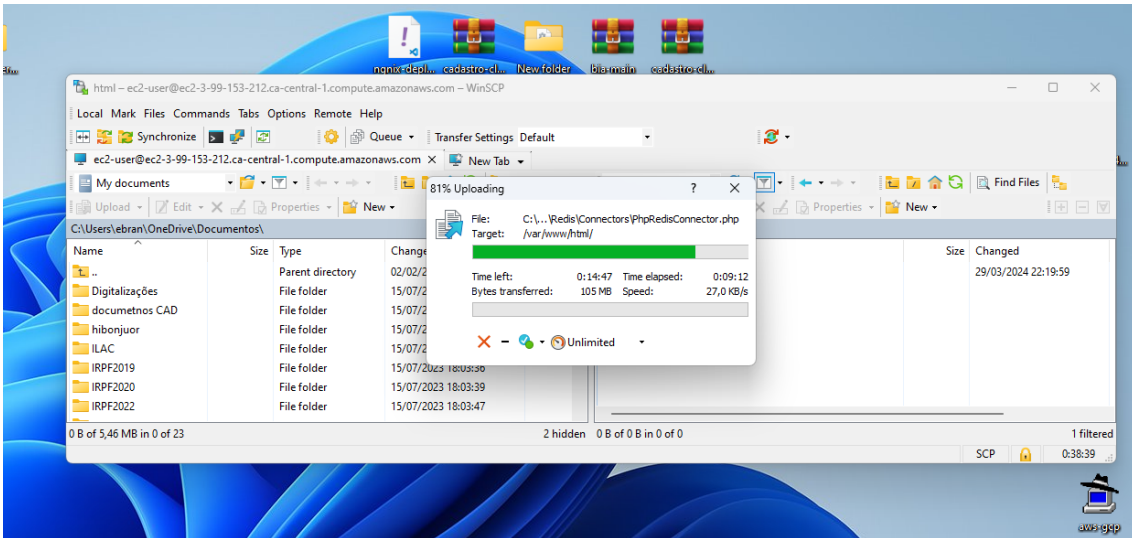
```
No containers need to be restarted.
```

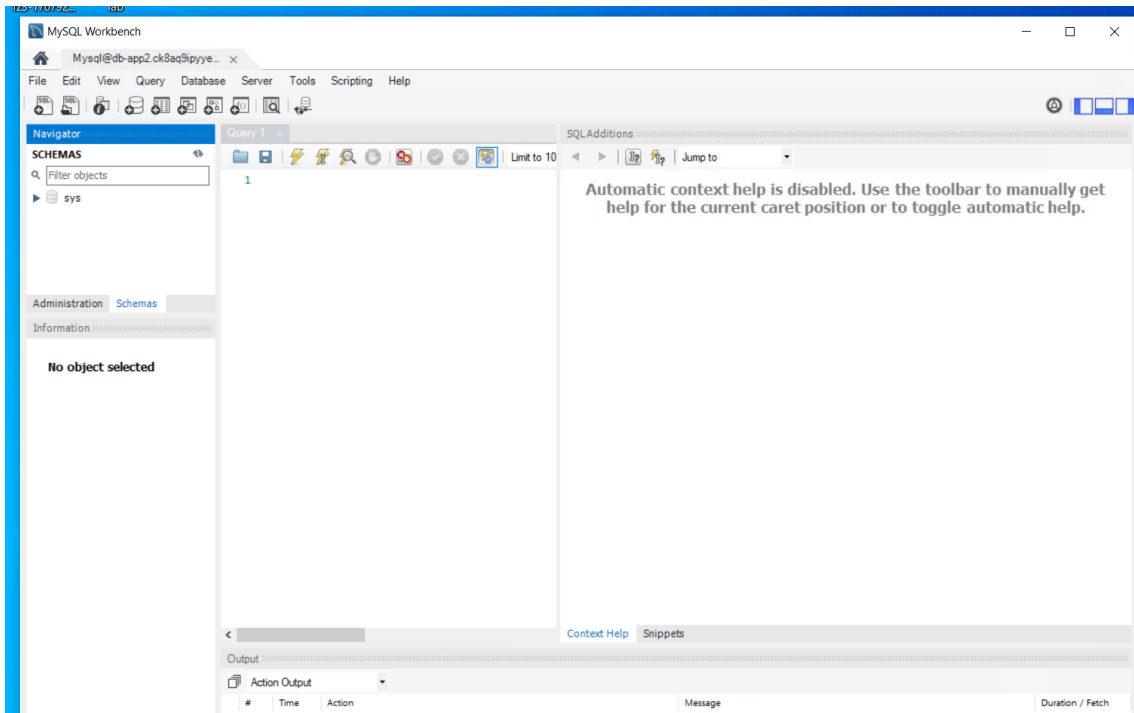
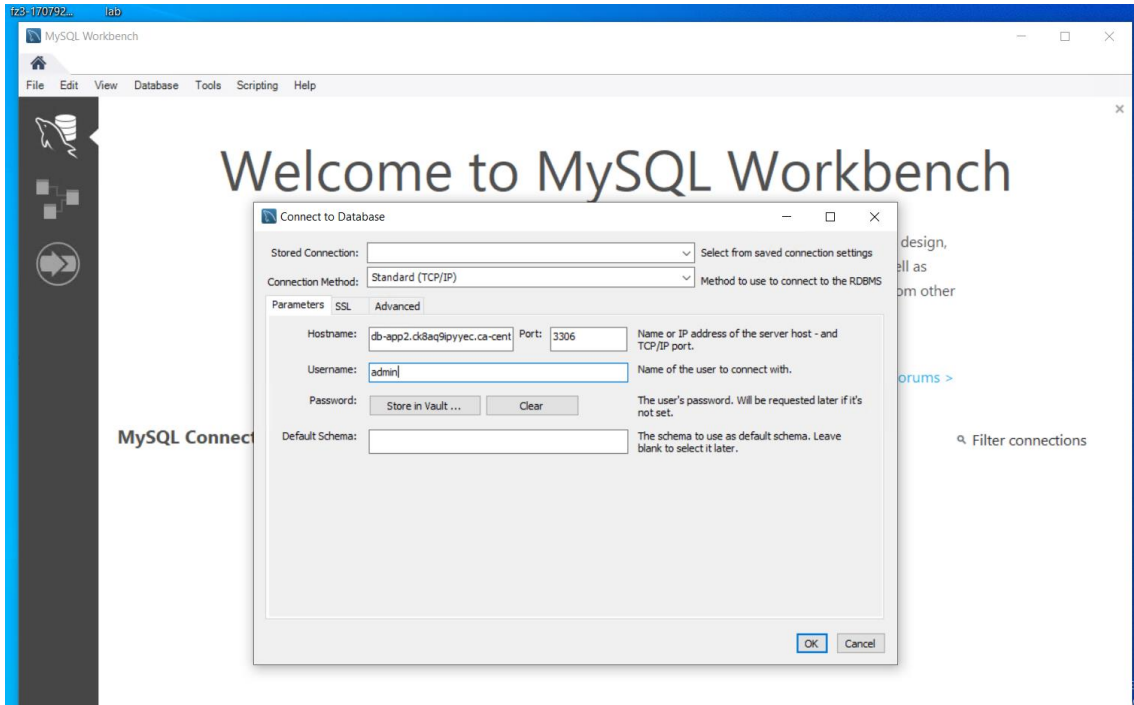
```
No user sessions are running outdated binaries.
```

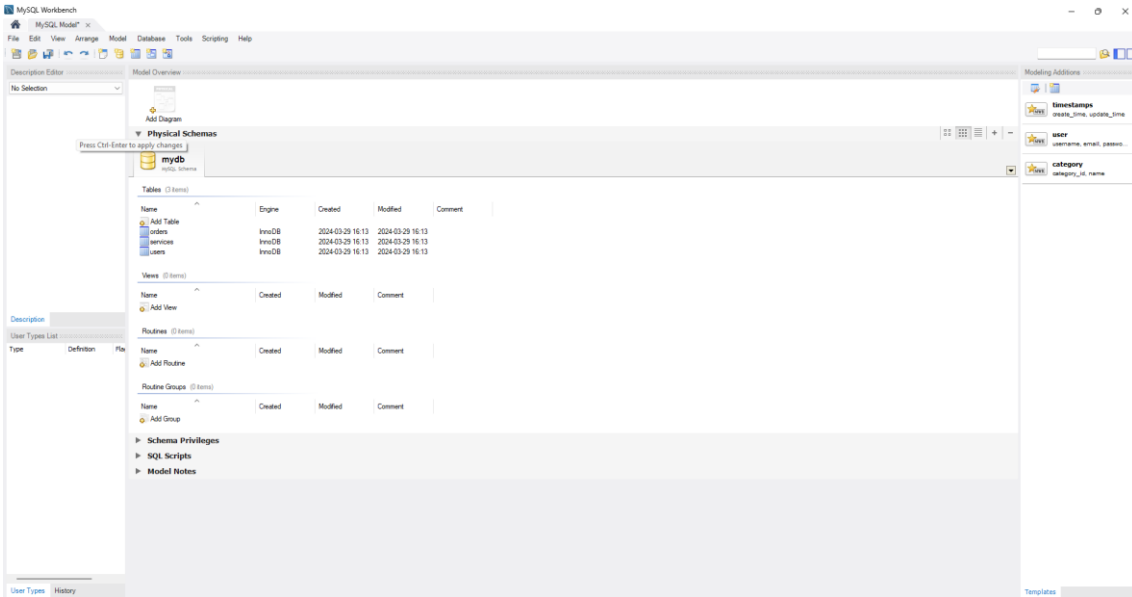
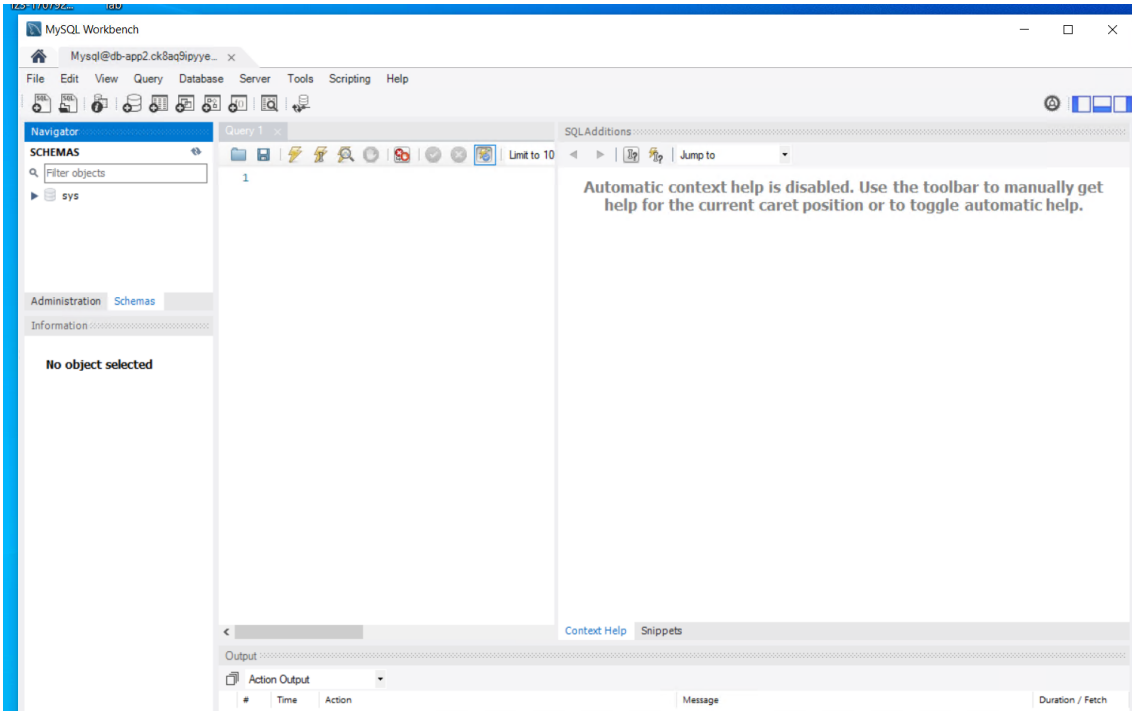
```
No VM guests are running outdated hypervisor (qemu) binaries on this host.
```

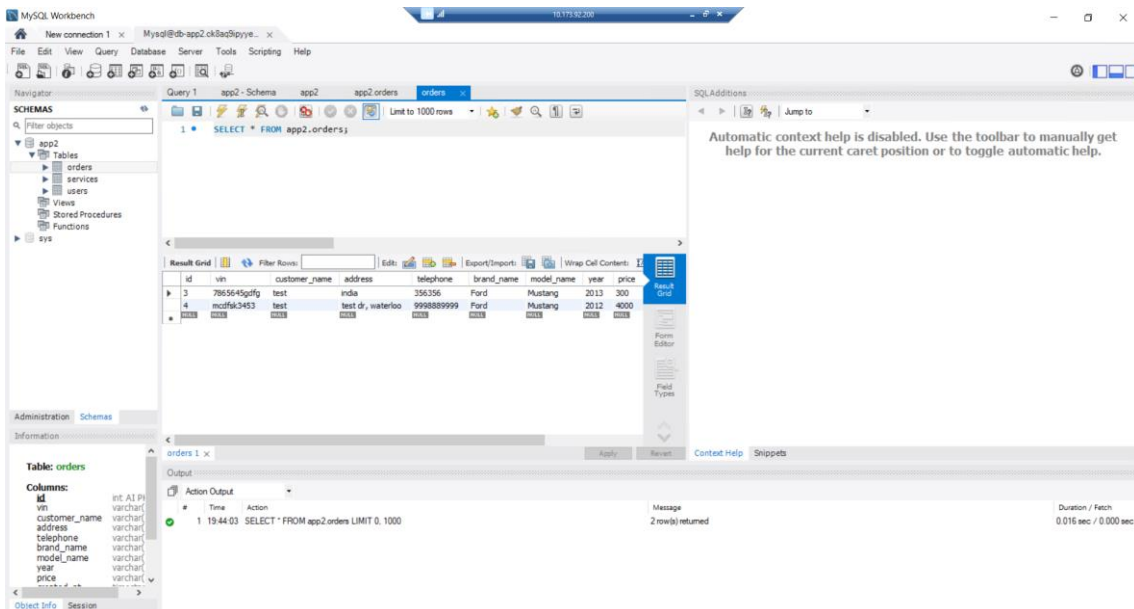
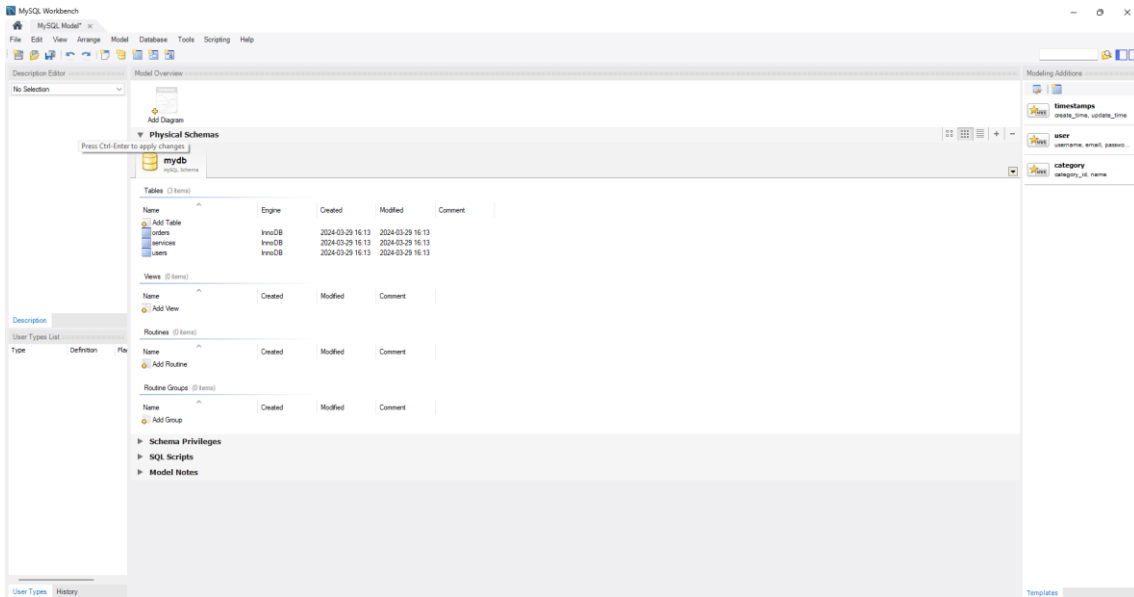
```
ubuntu@ip-172-31-13-115:/etc/apache2/mods-enabled$ sudo systemctl restart apache2
```

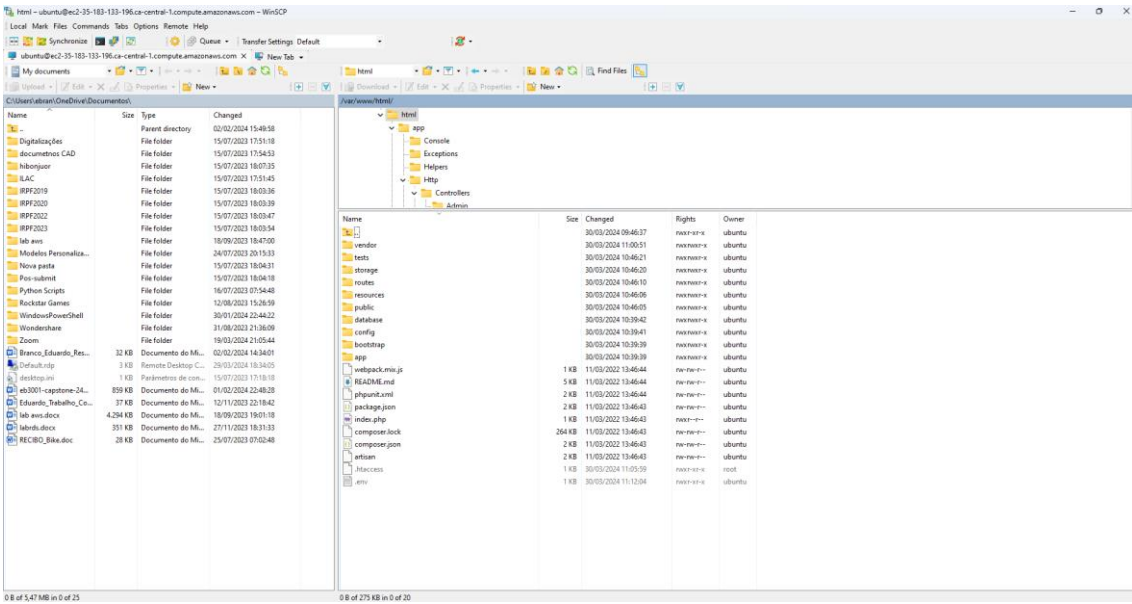
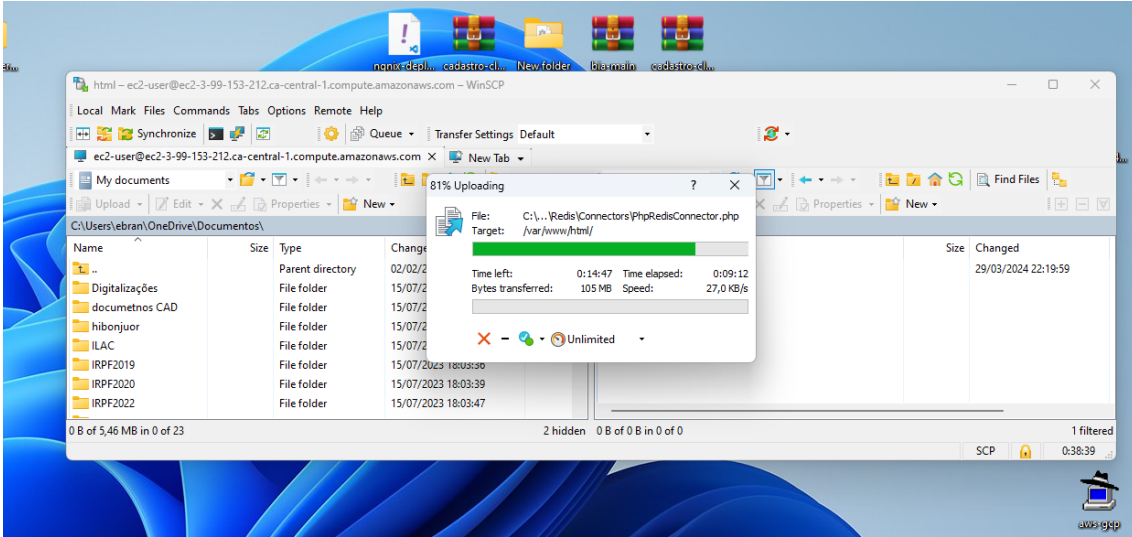
```
ubuntu@ip-172-31-13-115:/etc/apache2/mods-enabled$
```











```
env - Notepad
File Edit Format View Help
APP_NAME=Laravel
APP_ENV=local
APP_KEY=base64:2pwf06IIs6XLYT4un5960qBI1hf4fa2nlpIHAP21BVA=
APP_DEBUG=true
APP_URL=http://localhost

LOG_CHANNEL=stack
LOG_LEVEL=debug

DB_CONNECTION=mysql
DB_HOST=db-app2.ck8aq9ipyec.ca-central-1.rds.amazonaws.com
DB_PORT=3306
DB_DATABASE=app2
DB_USERNAME=admin
DB_PASSWORD=Secret55

DB_CONNECTION_SECOND=mysql
DB_HOST_SECOND=gp3-app1.cbgi8soogbt8.us-east-1.rds.amazonaws.com
DB_PORT_SECOND=3306
DB_DATABASE_SECOND=app1
DB_USERNAME_SECOND=admin
DB_PASSWORD_SECOND=Secret55

BROADCAST_DRIVER=log
CACHE_DRIVER=file
QUEUE_CONNECTION=sync
SESSION_DRIVER=file
```

```
ubuntu@ip-172-31-13-115: /etc/apache2/mods-enabled
Setting up mariadb-client (1:10.6.16-0ubuntu0.22.04.1) ...
Processing triggers for man-db (2.10.2-1) ...
Processing triggers for libc-bin (2.35-0ubuntu3.6) ...
Scanning processes...
Scanning candidates...
Scanning linux images...

Restarting services...
Service restarts being deferred:
/etc/needrestart/restart.d/dbus.service
systemctl restart getty@tty1.service
systemctl restart networkd-dispatcher.service
systemctl restart systemd-logind.service
systemctl restart unattended-upgrades.service
systemctl restart user@1000.service

No containers need to be restarted.

No user sessions are running outdated binaries.

No VM guests are running outdated hypervisor (qemu) binaries on this host.
ubuntu@ip-172-31-13-115:/etc/apache2/mods-enabled$ systemctl enable mariadb
==== AUTHENTICATING FOR org.freedesktop.systemd1.manage-unit-files ====
Authentication is required to manage system service or unit files.
Authenticating as: Ubuntu (ubuntu)
Password:
[1]+ Stopped                  systemctl enable mariadb
ubuntu@ip-172-31-13-115:/etc/apache2/mods-enabled$ mysql -h db-app2.ck8aq9ipyec.ca-central-1.rds.amazonaws.com -P 3306 -u admin -p
Enter password:
Welcome to the MariaDB monitor.  Commands end with ; or \g.
Your MySQL connection id is 20
Server version: 8.0.35 Source distribution

Copyright (c) 2000, 2018, Oracle, MariaDB Corporation Ab and others.

Type 'help;' or '\h' for help. Type '\c' to clear the current input statement.

MySQL [(none)]> show databases
->
[2]+ Stopped                  mysql -h db-app2.ck8aq9ipyec.ca-central-1.rds.amazonaws.com -P 3306 -u admin -p
ubuntu@ip-172-31-13-115:/etc/apache2/mods-enabled$ mysql -h db-app2.ck8aq9ipyec.ca-central-1.rds.amazonaws.com -P 3306 -u admin -p
Enter password:
Welcome to the MariaDB monitor.  Commands end with ; or \g.
Your MySQL connection id is 22
Server version: 8.0.35 Source distribution

Copyright (c) 2000, 2018, Oracle, MariaDB Corporation Ab and others.

Type 'help;' or '\h' for help. Type '\c' to clear the current input statement.

MySQL [(none)]> show databases;
+-----+
| Database |
+-----+
| app2     |
| information_schema |
| mysql    |
| performance_schema |
| sys      |
+-----+
5 rows in set (0.002 sec)

MySQL [(none)]>
```



```
ubuntu@ip-172-31-13-115:/etc/apache2/mods-enabled
Setting up mariadb-client (1:10.6.16-0ubuntu0.22.04.1) ...
Processing triggers for man-db (2.10.2-1) ...
Processing triggers for libc-bin (2.35-0ubuntu3.6) ...
Scanning processes...
Scanning candidates...
Scanning linux images...

Restarting services...
Service restarts being deferred:
/etc/needrestart/restart.d/dbus.service
systemctl restart getty@tty1.service
systemctl restart networkd-dispatcher.service
systemctl restart systemd-logind.service
systemctl restart unattended-upgrades.service
systemctl restart user@1000.service

No containers need to be restarted.

No user sessions are running outdated binaries.

No VM guests are running outdated hypervisor (qemu) binaries on this host.
ubuntu@ip-172-31-13-115:/etc/apache2/mods-enabled$ systemctl enable mariadb
==== AUTHENTICATING FOR org.freedesktop.systemd1.manage-unit-files ====
Authentication is required to manage system service or unit files.
Authenticating as: Ubuntu (ubuntu)
Password:
[1]+  Stopped                  systemctl enable mariadb
ubuntu@ip-172-31-13-115:/etc/apache2/mods-enabled$ mysql -h db-app2.ck8aq9ipyyec.ca-central-1.rds.amazonaws.com -P 3306 -u admin -p
Enter password:
Welcome to the MariaDB monitor.  Commands end with ; or \g.
Your MySQL connection id is 20
Server version: 8.0.35 Source distribution

Copyright (c) 2000, 2018, Oracle, MariaDB Corporation Ab and others.

Type 'help;' or '\h' for help. Type '\c' to clear the current input statement.

MySQL [(none)]> show databases
->
[2]+  Stopped                  mysql -h db-app2.ck8aq9ipyyec.ca-central-1.rds.amazonaws.com -P 3306 -u admin -p
ubuntu@ip-172-31-13-115:/etc/apache2/mods-enabled$ mysql -h db-app2.ck8aq9ipyyec.ca-central-1.rds.amazonaws.com -P 3306 -u admin -p
Enter password:
Welcome to the MariaDB monitor.  Commands end with ; or \g.
Your MySQL connection id is 22
Server version: 8.0.35 Source distribution

Copyright (c) 2000, 2018, Oracle, MariaDB Corporation Ab and others.

Type 'help;' or '\h' for help. Type '\c' to clear the current input statement.

MySQL [(none)]> show databases;
+-----+
| Database           |
+-----+
| app2                |
| information_schema |
| mysql               |
| performance_schema |
| sys                 |
+-----+
5 rows in set (0.002 sec)

MySQL [(none)]> 
```

